



**Home Games at the Lotto Park
Avenue Théo Verbeecklaan 2, 1070 Anderlecht**

MEDIA GUIDE

- 1. Welcome Word*
- 2. Access Information*
 - 2.1 Accreditations*
 - 2.2 Parking Facilities*
 - 2.3 Wifi Access*
- 3. Useful information on matchdays*
 - 3.1 Press kiosque*
 - 3.2 Parking Access*
 - 3.3 Press Conference Room*
 - 3.4 Press Box*
 - 3.5 Photographers*
 - 3.6 Mixed Zone*
- 4. Code of Conduct*
- 5. Contact Information*

1. WELCOME WORD

Royal Sporting Club Anderlecht wishes the members of the (inter)national press and media a very warm welcome at the Lotto Park. This Media Guide is designed to provide you with useful information about the media activities on matchdays.



2. ACCESS INFORMATION

2.1 ACCREDITATIONS

- *Accreditation requests for the Jupiler Pro League, European games and cup games need to be sent to Sportspress. Please contact info@sportspress.be*

2.2 PARKING FACILITIES

- *For Rights holders:
'Eurostar - A' car park (Avenue Théo Verbeecklaan 2, 1070 Anderlecht, Entry 2)*
- *Parking tickets are delivered by the club Rights holders*

- *For Non-Rights holders:
'Eurostar - S' car park (Entry 2, Avenue Théo Verbeecklaan 2, 1070 Anderlecht)
parking tickets are sent by Sportspress after registering*

3. USEFUL INFORMATION ON MATCHDAYS

3.1 Ticketing desk

3.2 Parking Access

3.3 Press Conference Room

3.4 Press Box

3.5 Photographs

3.6 Mixed Zone

3.1 TICKETING DESK FOR ACCREDITATIONS



Entry 2, Avenue Théo Verbeecklaan 2, 1070 Anderlecht

<https://maps.app.goo.gl/hauZo3FZMER2gyHcA>



3.2 PARKING FACILITIES

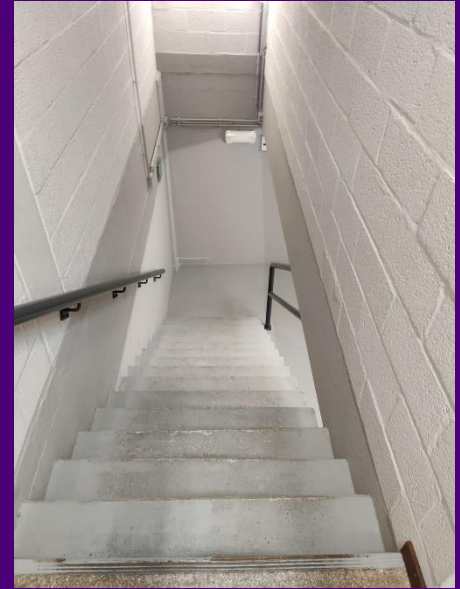


Check your ticket for the right parking



3.3 PRESS CONFERENCE ROOM

the press conference is located to the left of the main entrance and to the far left of the parking



Arriving through the gate, take the door on your right and go down the stairs



3.3 PRESS CONFERENCE ROOM

You will then be taken directly to the press room where you will find your seat and something to drink



3.4 PRESS BOX

To access the press box, please follow the road W15



Please be aware that one part is reserved for the written press and the other for broadcasters and commentators



3.5 PHOTOGRAPHERS

During matches, photographers are requested to position themselves behind the goals, at each end of the pitch

A side path allows you to walk behind the LED-boardings without disturbing the players



3.6 MIXED ZONE

The mixed zone is located in the extension of the entrance hall, in the vicinity of the field



Players and coaches will be available to answer your questions after the final whistle



4. CODE OF CONDUCT

All members of the press are to behave in a neutral and serene manner at all times. The facilities such as the press stands and the press room are for registered journalists only. There will be no contacts with the players or staff, not even in the mixed zone, without permission of the head of communications. Please respect the privacy of staff and players and stay in the zones that are specifically intended for the press.



5. CONTACT INFORMATION

For all accreditation requests, please contact:

info@sportspress.be

<https://www.sportspress.be/>

Bruno Govers

:+32 475 91 91 19

E: bruno.govers@gmail.com

Bram Van Vaerenbergh

M: +32 476 79 59 37

E: bram_van_vaerenbergh@hotmail.com

For all other media requests

Mathias Declercq

M:+32 486 56 29 36

E: mathias.declercq@rscanderlecht.be





ENJOY THE GAME.